

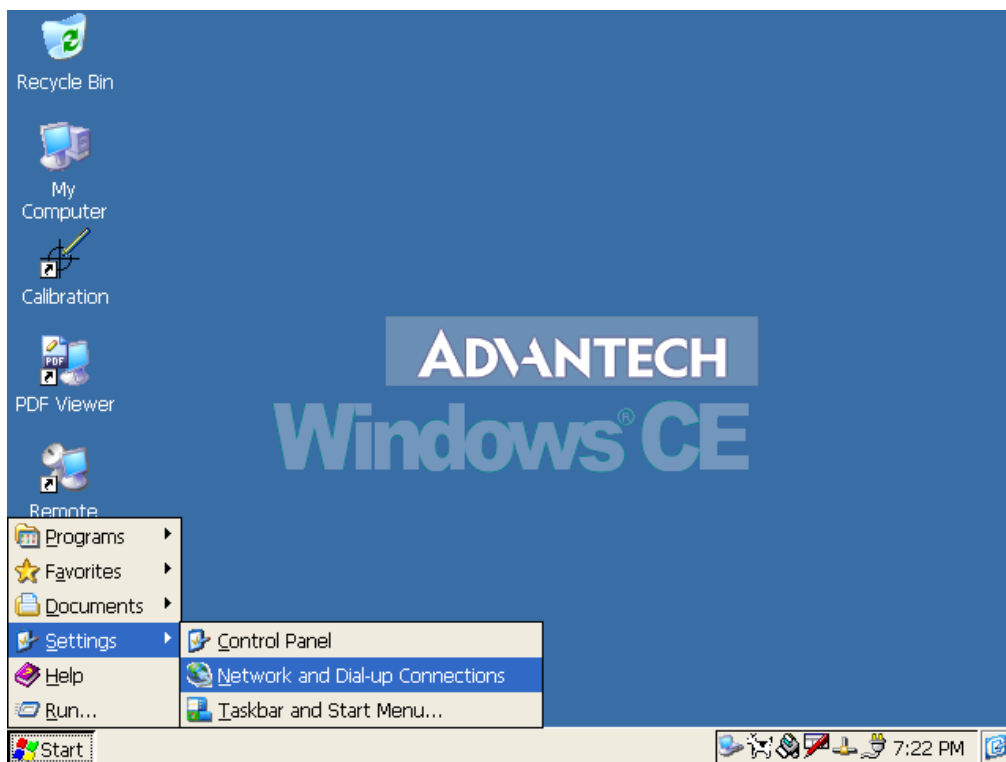
# Ethernet Configuration Note

## *Introduction*

This document introduces how to configure Ethernet port of UNO-2000 series properly.

## *Ethernet Configuration Procedure*

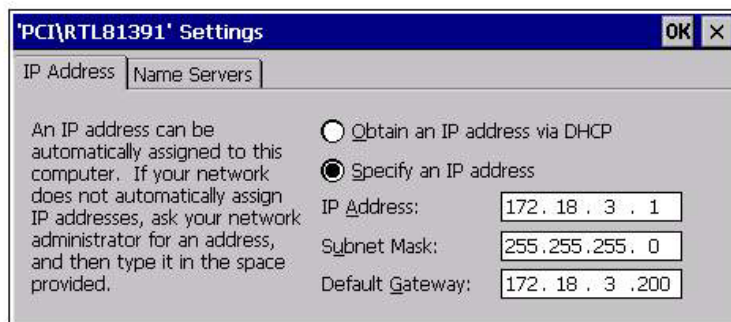
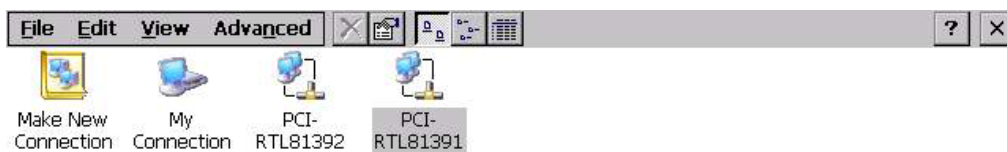
1. Press start of task bar of window system and select “**Setting**” → “**Networking and Dial-up connections**”.



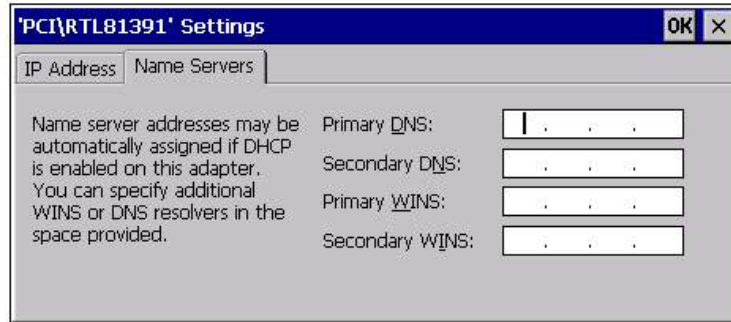
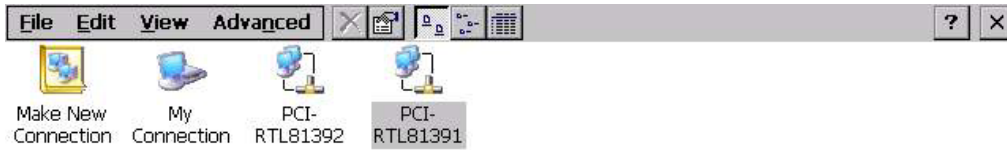
2. This window displays all available connections. If you want to configure any one, just double click its icon. For example, double click PCI-RTL81391 icon to configure its settings.



3. Select **IP address** tab under “PCI\RTL81391” setting windows.
- If it is node of LAN with DHCP servers, choose **Obtain an IP via DHCP**.
  - If it is a node of a LAN with fixed IP server, choose **Specify an IP address** and enter IP address, subnet mask and gateway address.



4. Select **Name Server** tab under “PCI\RTL81391” setting windows, enter Domain Name Server IP address in the Primary DNS blank.



5. Press start of task bar of window system and select “**Run**”. Execute **regsave** to save registry setting to storage card.

